



Breathable Inflator Repair Program





INTRODUCTION OF SHERWOOD GEMINI

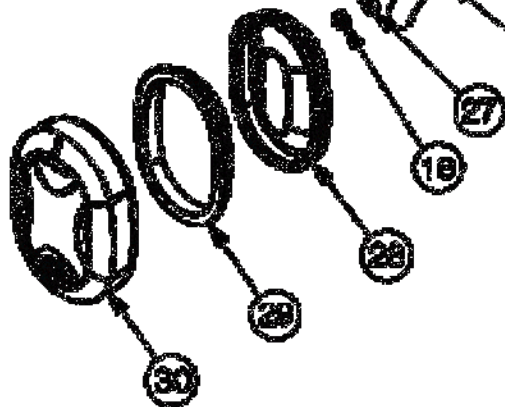
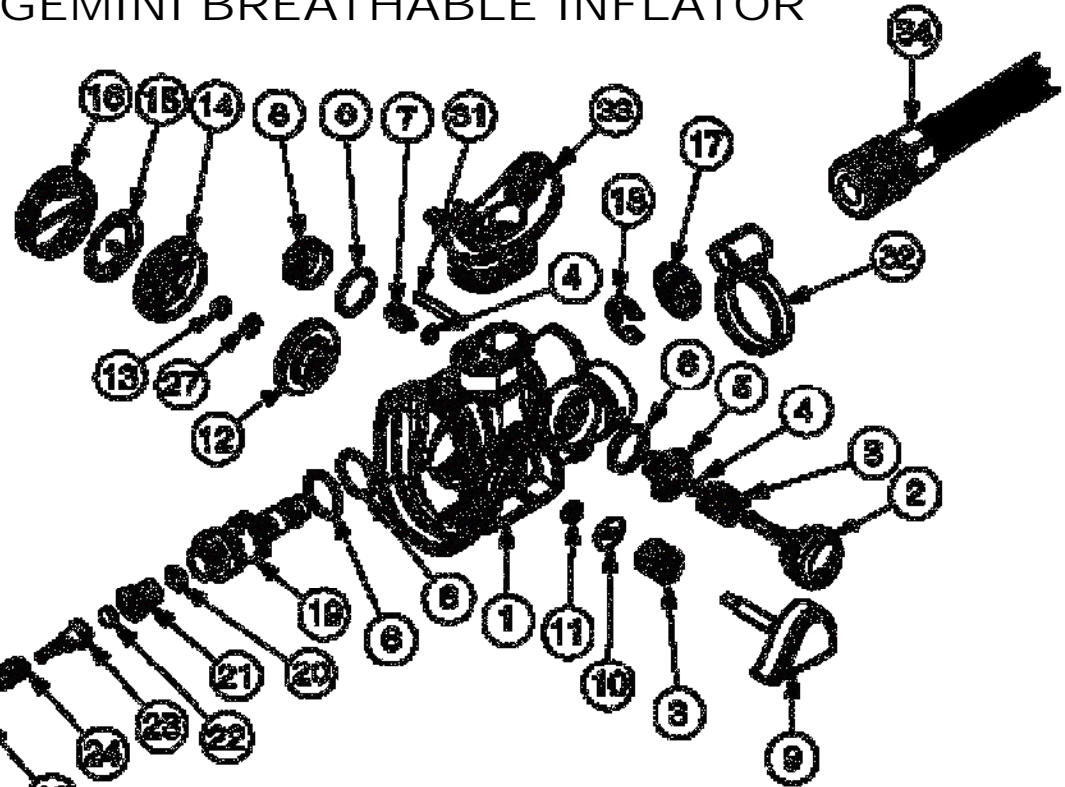
Breathing Regulator/ Inflator	Replaces the Conventional BC Power Inflator and Back-Up 2nd Stage	Reduce Diver's Profile Underwater
Ergonomic Body	Gemini Case Suits Divers Hand Naturally	Permits Diver to Single Handedly: Power Inflate, Deflate, Orally Inflate and Purge Without Difficulty
Low Work of Breathing	High Regulator Performance	Offers Diver Ease of Breathing in Demanding Situations



Disassembly Procedures

ITEM	PART#	DESCRIPTION
1	9000-1	Housing
2	9000-2	Power Inflator Button Assembly
3	9000-52	Power Inflator Spring
4	006-B	O-ring
5	9000-22	Power Inflator Retainer
6	016B	O-ring
7	9000-21	Power Inflator Poppet
8	9000-7	Power Inflator Valve Cap
9	9000-3	Oral Inflator Button
10	9000-7	Oral Inflator Washer
11	008B	O-ring
12	9000-35	Oral Inflator Seal
13	9000-47	Lock Nut
14	9000-4	Exhaust Valve Base
15	9000-32	Exhaust Valve

GEMINI BREATHABLE INFLATOR



ITEM	PART#	DESCRIPTION
16	9000-5	Exhaust Valve Cover
17	9000-24	Retaining Ring Cover
18	9000-46	Retaining Ring
18	9000-8	Regulator Valve Body
20	010B	O-ring
21	9000-17	Seat Crown
22	9000-14	L.P.Seat
23	9000-19	Regulator Poppet
24	9000-51	Regulator Spring
25	9000-6	Lever Support

ITEM	PART#	DESCRIPTION
26	9000-37	Demand Lever
27	9000-9	Washer
28	9000-33	Diaphragm
29	9000-13	Diaphragm Retainer
30	9000-12	Cover
31	9000-49	Retaining Pin
32	9000-36	Quick Connect Cap
33	9000-34	Mouthpiece
34	9000-60	Hose Assembly / Quick Disconnect
35		Cable Tie (not shown)

USE WIRE PLIERS





USE NEEDLE
NOSE PLIERS



Disassembly Procedures

POWER INFLATOR ASSEMBLY

USE NEEDLE NOSE PLIERS



“SQUEEZE OR PINCH METHOD” WITH PLASTIC PICK



CAUTION

Power Inflator Button is
Spring Loaded Place
Hand Over Button when
Removing Poppet

USE SMALL FLAT
BLADE SCREWDRIVER REMOVE
POPPET



DISCARD O-RINGS



USE NEEDLE NOSE PLIERS
TO REMOVE RETAINER



**USE O-RING
TOOL SET
(P/N 11-090-500)
OR
PLASTIC PICK**

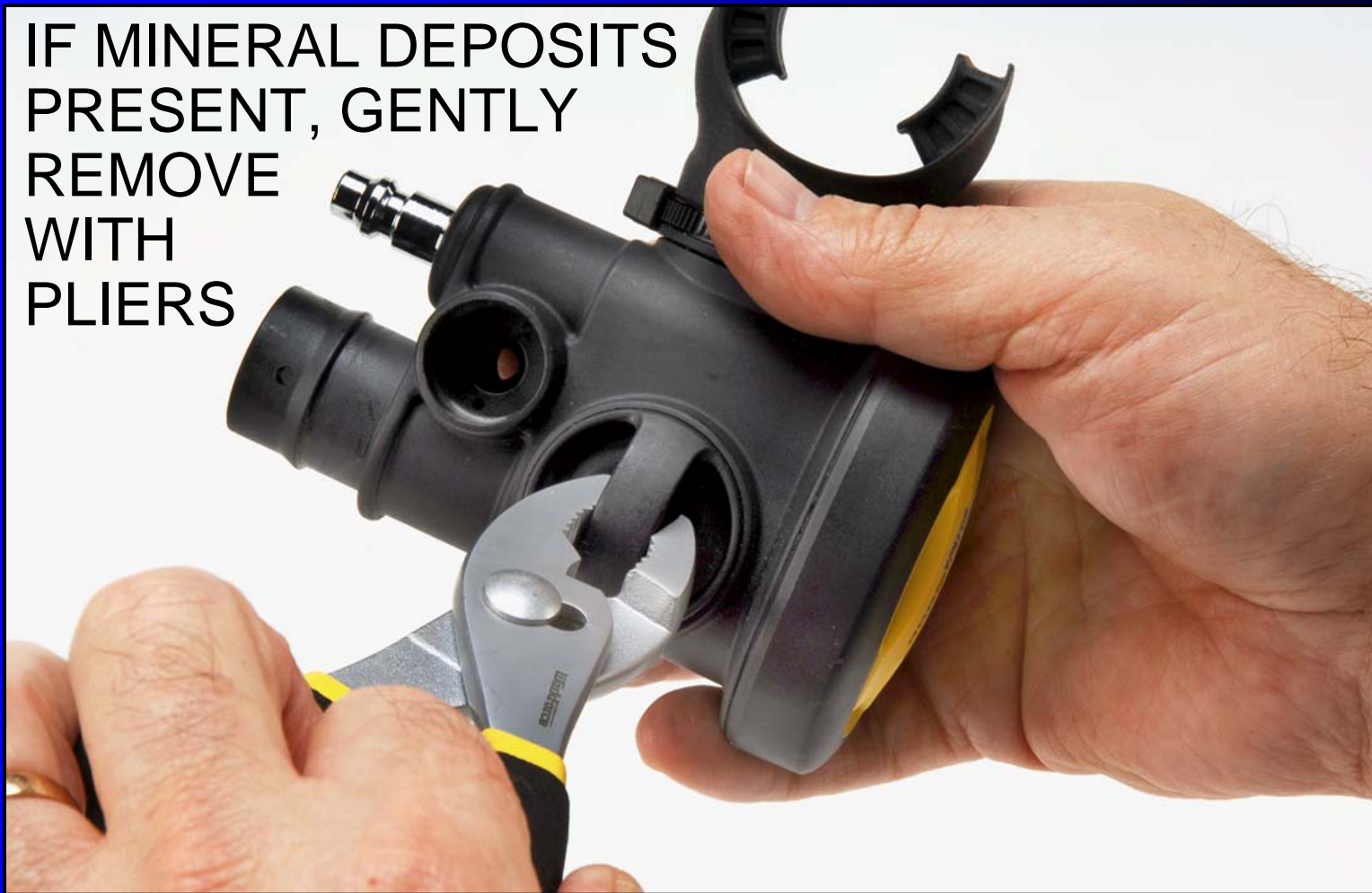


Disassembly Procedures

ORAL INFLATOR ASSEMBLY



IF MINERAL DEPOSITS
PRESENT, GENTLY
REMOVE
WITH
PLIERS



REMOVE EXHAUST VALVE ASSEMBLY



REMOVE
AND
DISCARD
1/4-INCH
LOCK NUT

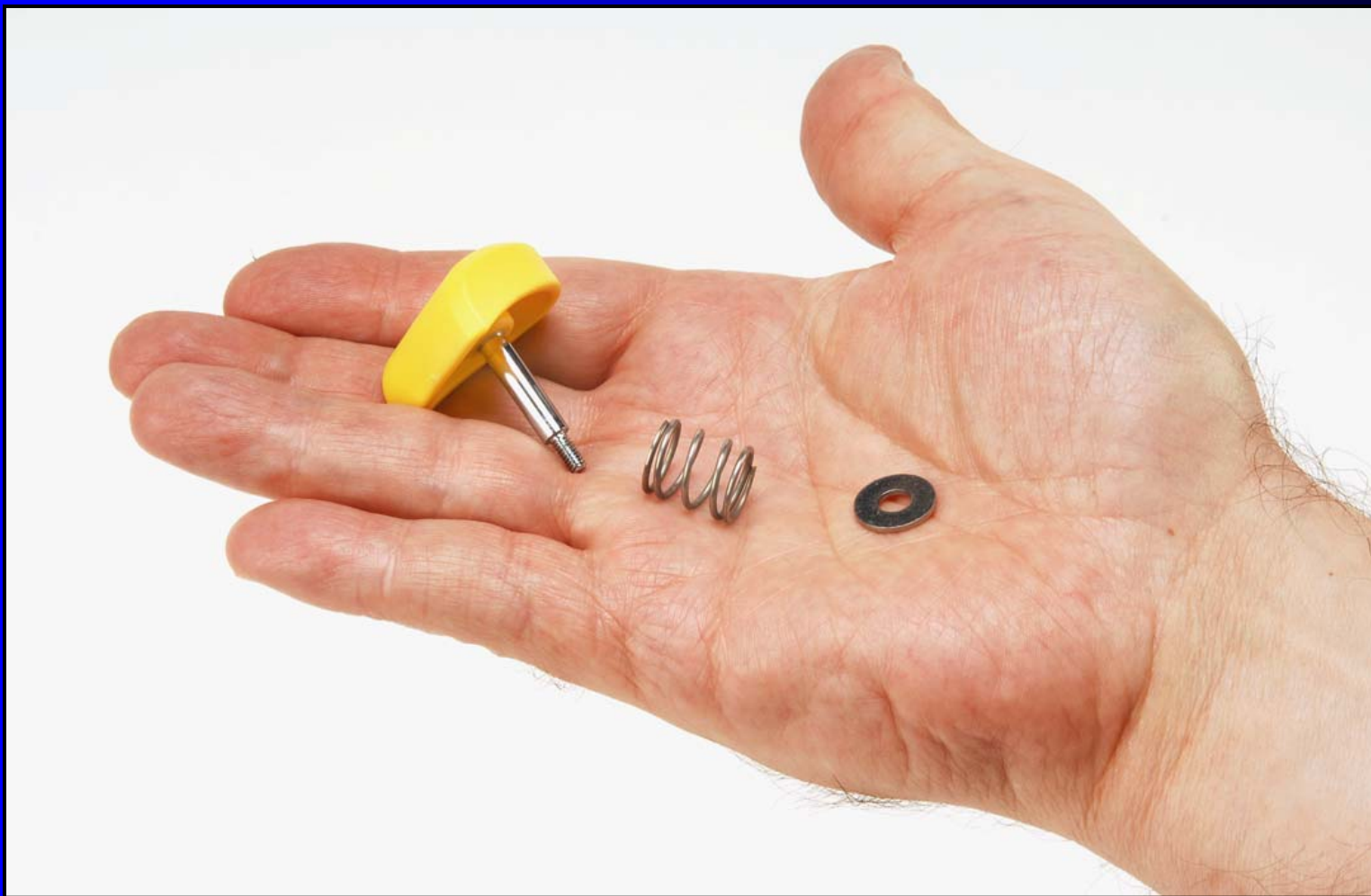


REMOVE WASHER



REMOVE BUTTON ASSEMBLY





REMOVE ORAL INFLATOR SEAL



DISCARD OLD O-RINGS



Disassembly Procedures

DEMAND REGULATOR
ASSEMBLY

LOCATE NOTCH IN COVER
USE SMALL FLAT
BLADE SCREWDRIVER



BLADE 90° SLIDE
AS SHOWN



GENTLY PRY



REMOVE DIAPHRAGM RETAINER





USE SMALL FLAT BLADE
SCREWDRIVER REMOVE
RETAINING RING COVER



REMOVE RETAINING RING



PUSH OUT REGULATOR
VALVE BODY





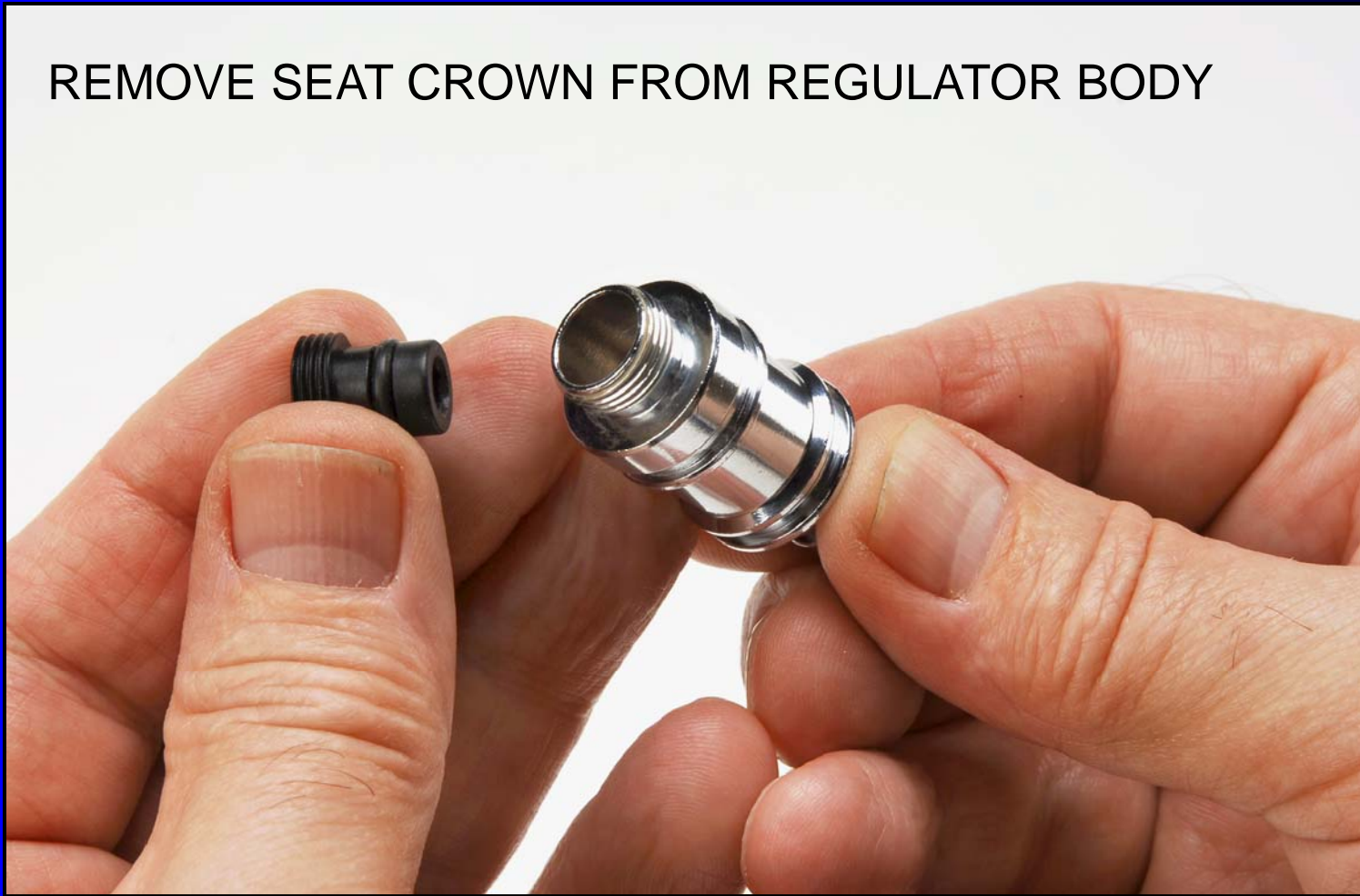
UNSCREW LEVER
ASSEMBLY TO SEPARATE
FROM BODY



REMOVE O-RING

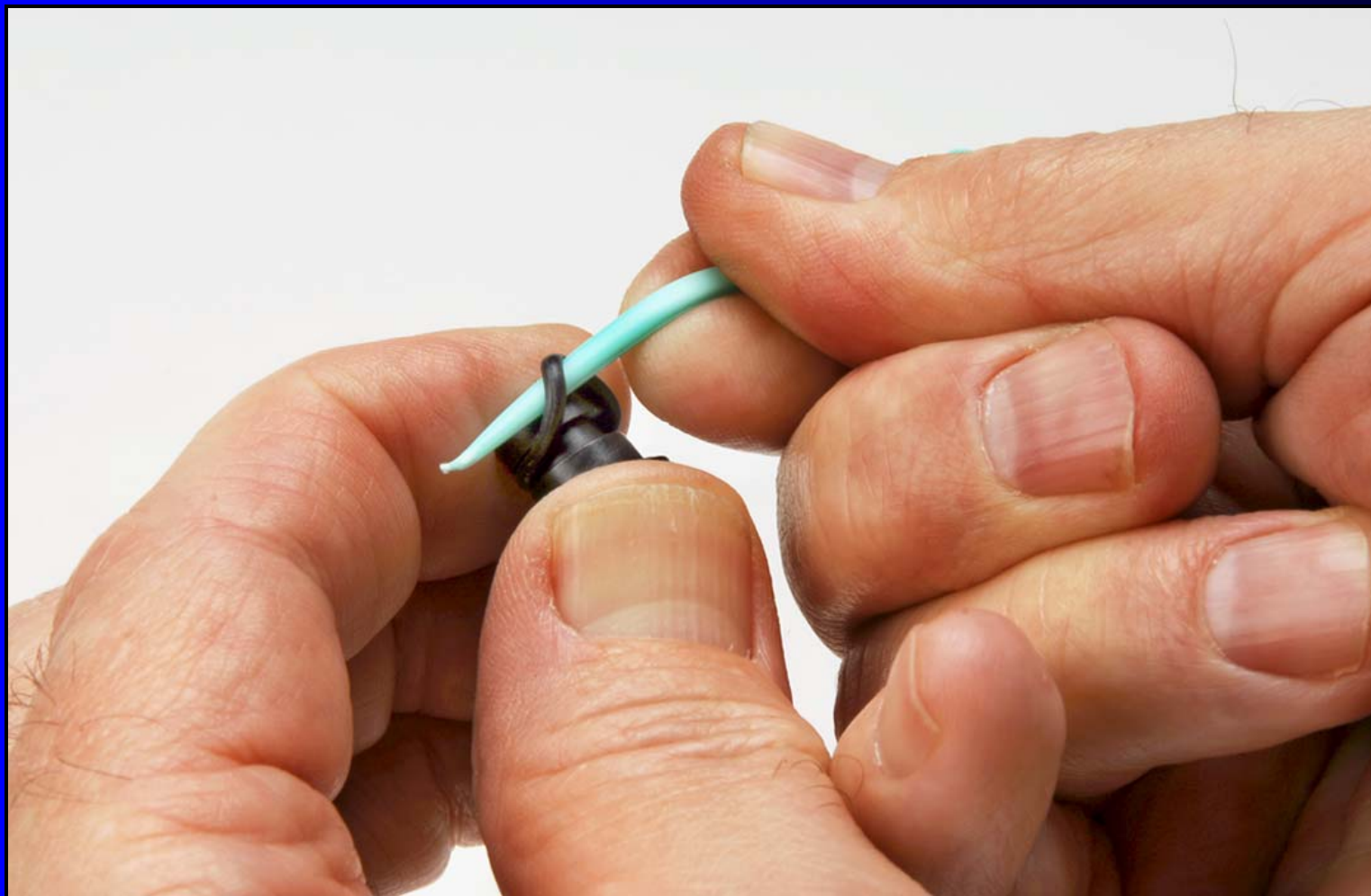


REMOVE SEAT CROWN FROM REGULATOR BODY



IF NECESSARY USE 3/16-INCH HEX KEY
WRENCH TO REMOVE SEAT CROWN





CAUTION

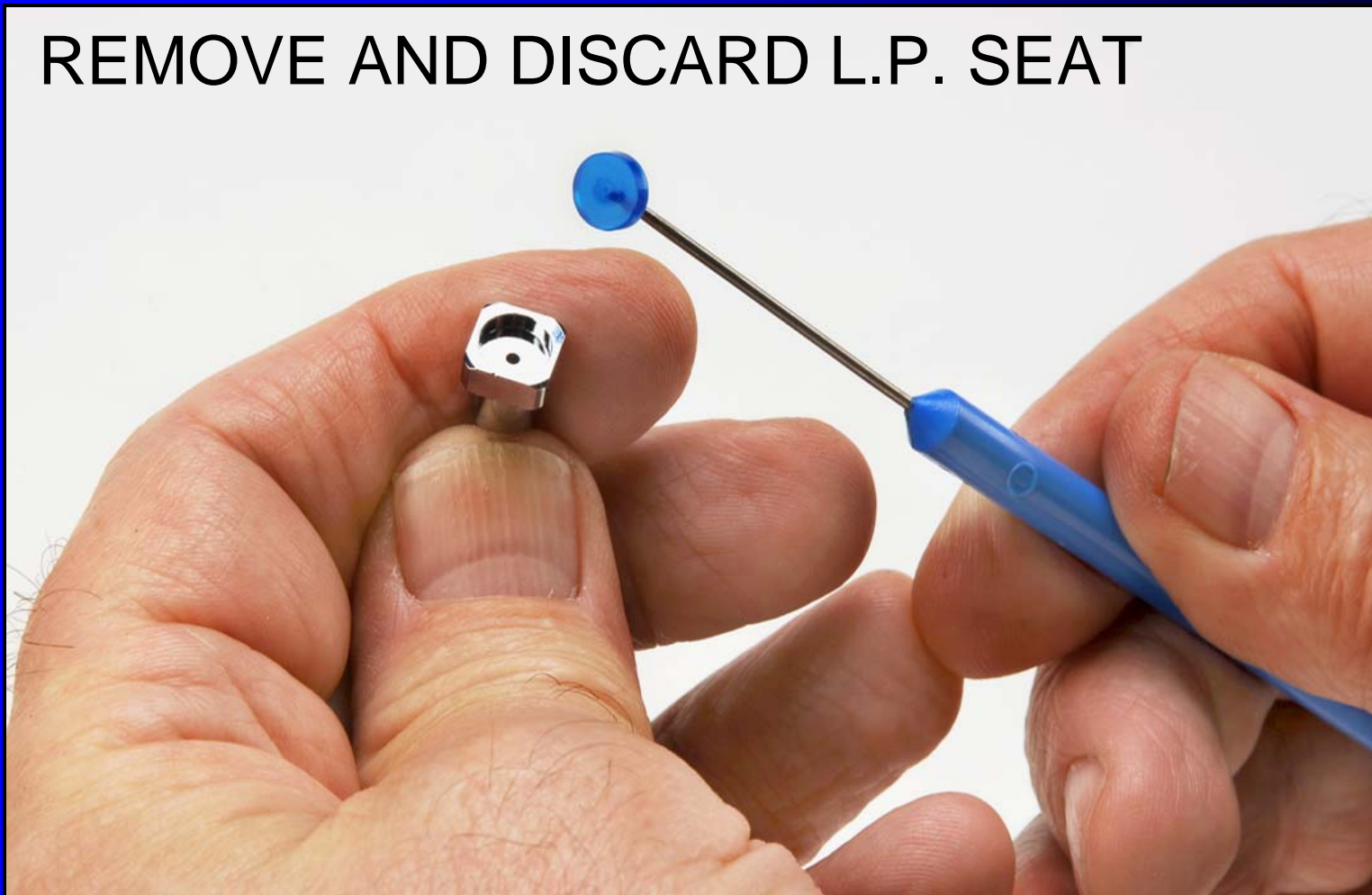
Parts are Spring Loaded
Place Finger Over Open
End of Lever Support

USE A 1/4-INCH NUT DRIVER TO
DISASSEMBLE





REMOVE AND DISCARD L.P. SEAT





USE WIRE
PLIERS

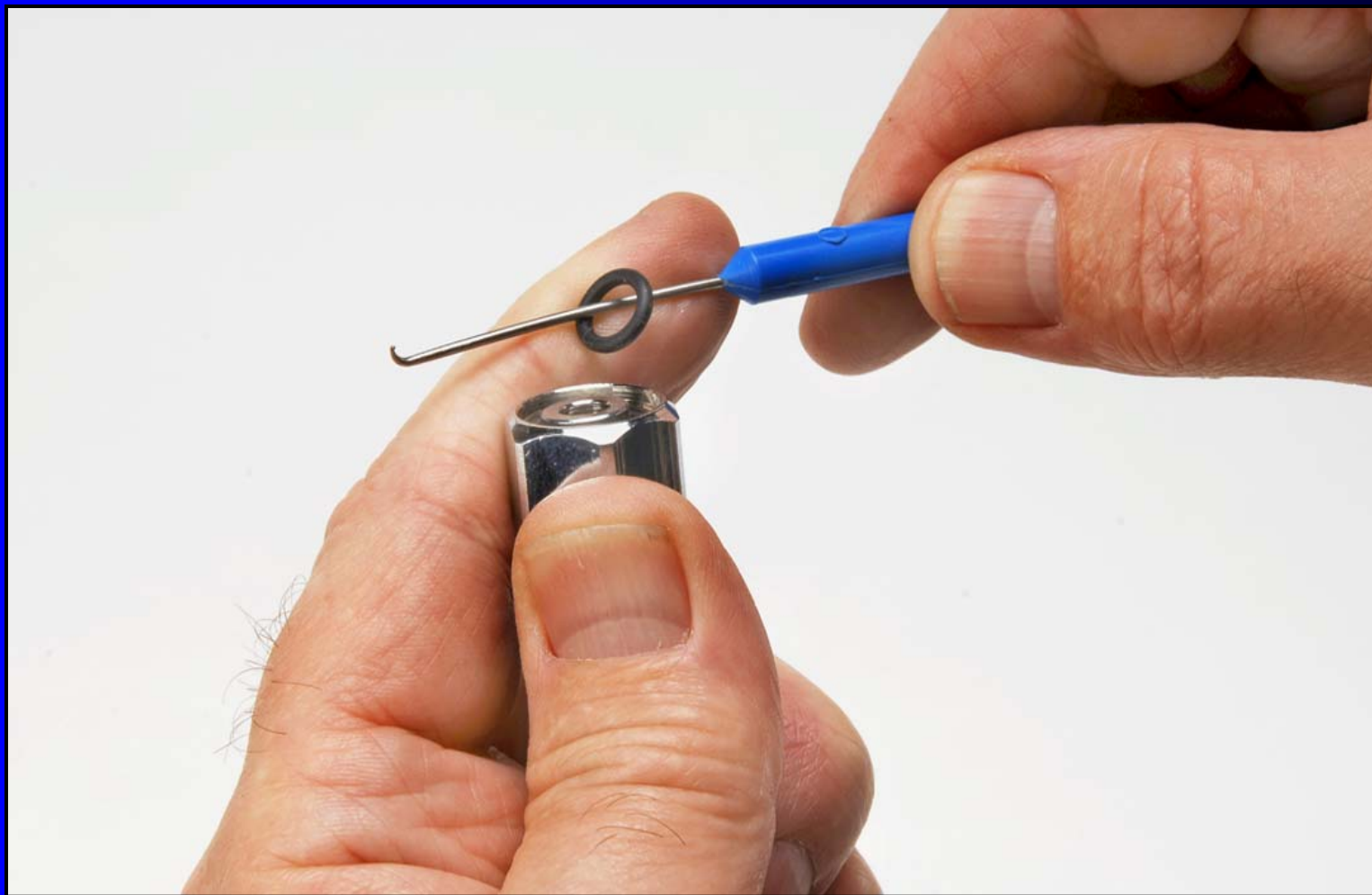


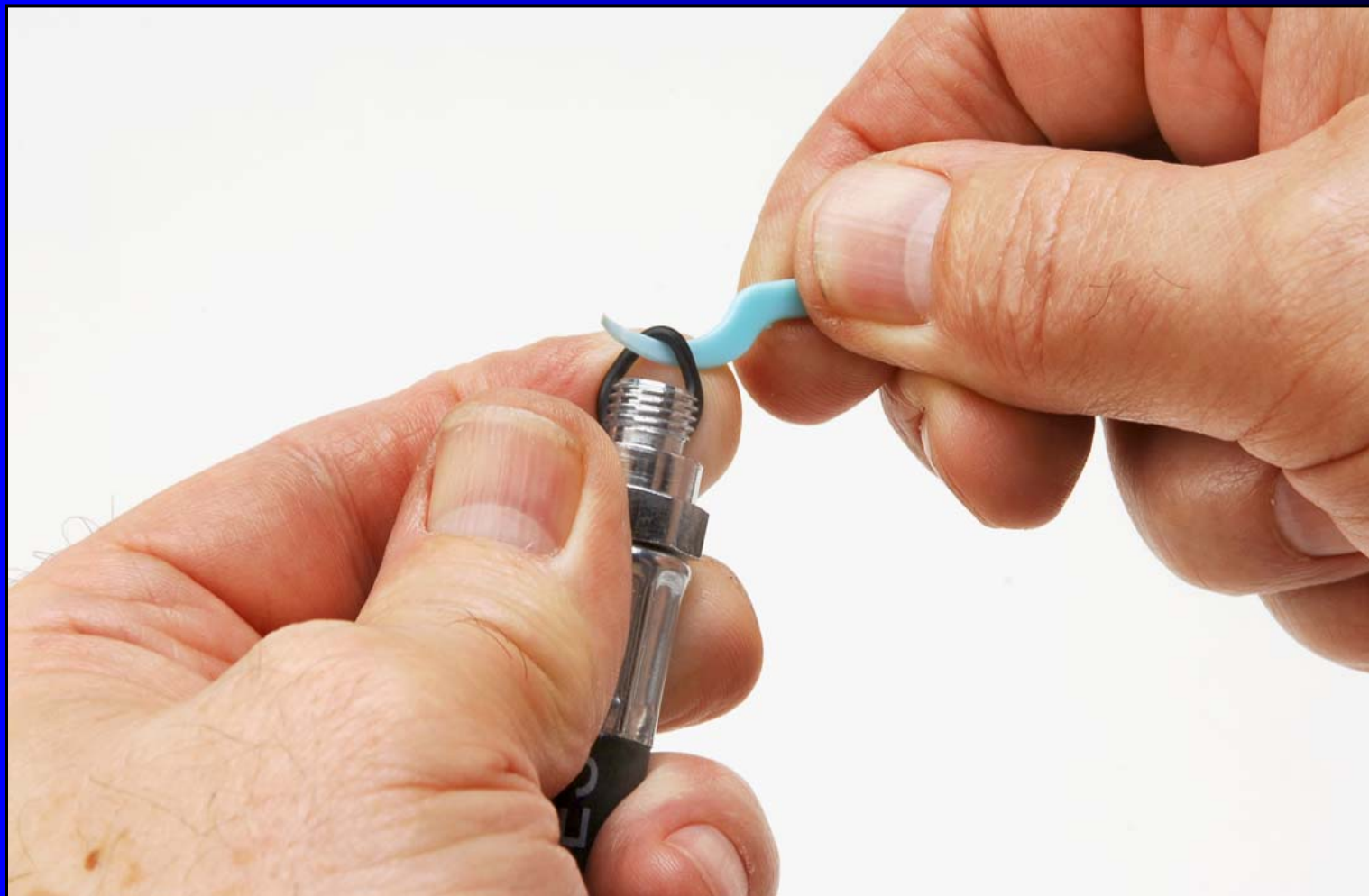
Disassembly Procedures

HOSE ASSEMBLY

USE 11/16-INCH
AND
13/16-INCH
OPEN END
WRENCH







CLEANING PROCEDURES

- Degrease: Warm water (100° to 120° F). 1 quart mixed 3-4 tablespoons household dish soap.
- Scrub: Nylon brush (toothbrush works well).
- Rinse: Fresh tap water.
- Ultra Sonic Clean: Acid bath
 1. Vinegar/water 50/50
 2. Lawrence Factor Wash (LFW™) or other Ultra Sonic cleaning agent
- Rinse: Fresh tap water.
- Blow Dry: Low pressure filtered air.

INSPECTION PROCEDURES

Magnifier:

_____ O-ring Grooves
Threads
Sealing Surfaces

Check For:

_____ Scratches
Dings
Nicks
Damaged Plating
Burrs
Fillings
Corrosion

Replace if Needed



SERVICE KIT

Part Number *9000-PK*

Includes:

006B	2 O-Rings
008B	1 O-Ring
016B	2 O-Rings
9000-14	L.P. Seat
9000-47	2 Lock Nuts
PP-18	3 Cable Ties

Reassembly Procedures

ORAL INFLATOR ASSEMBLY

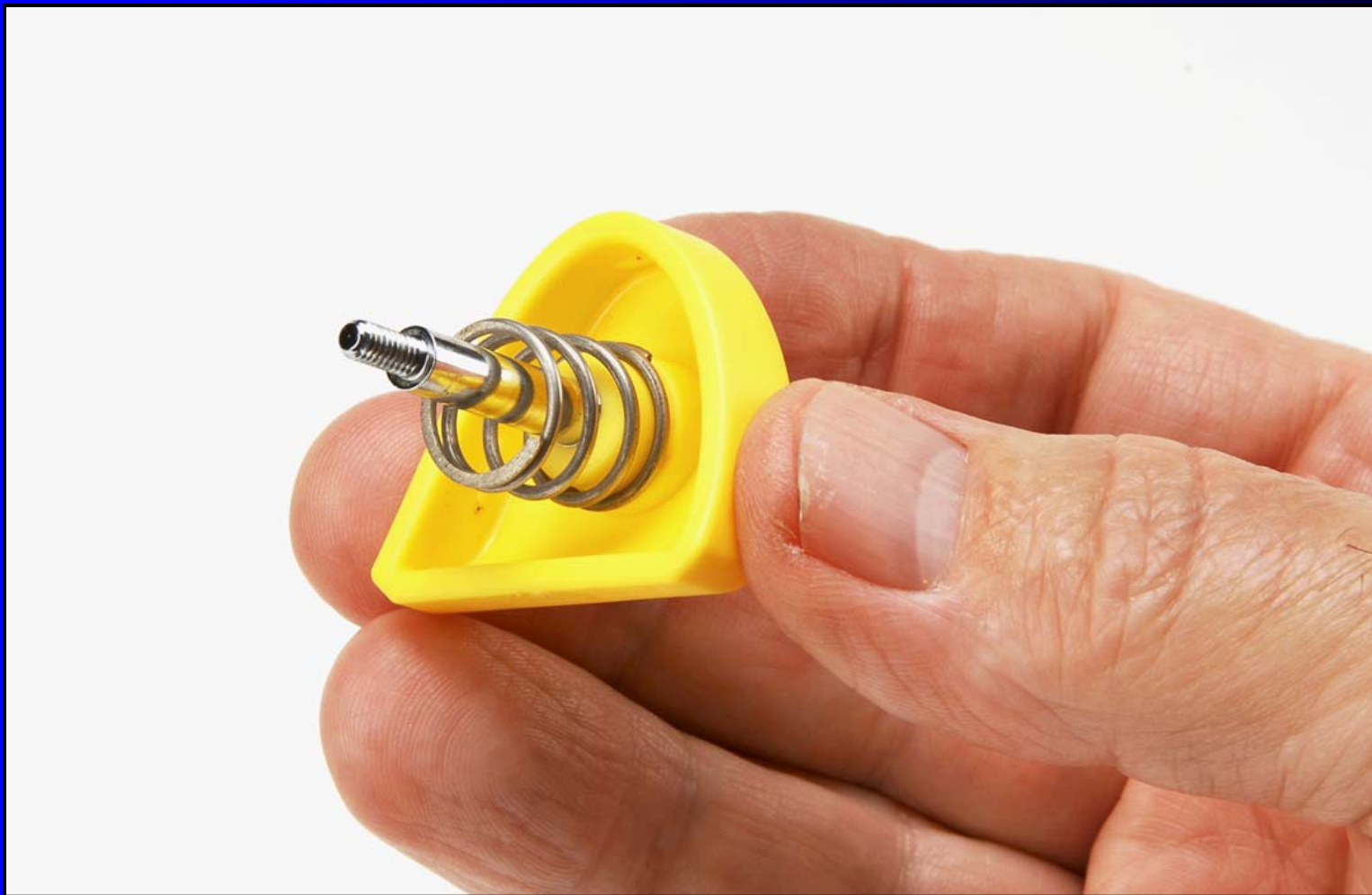
INSTALL NEW O-RING

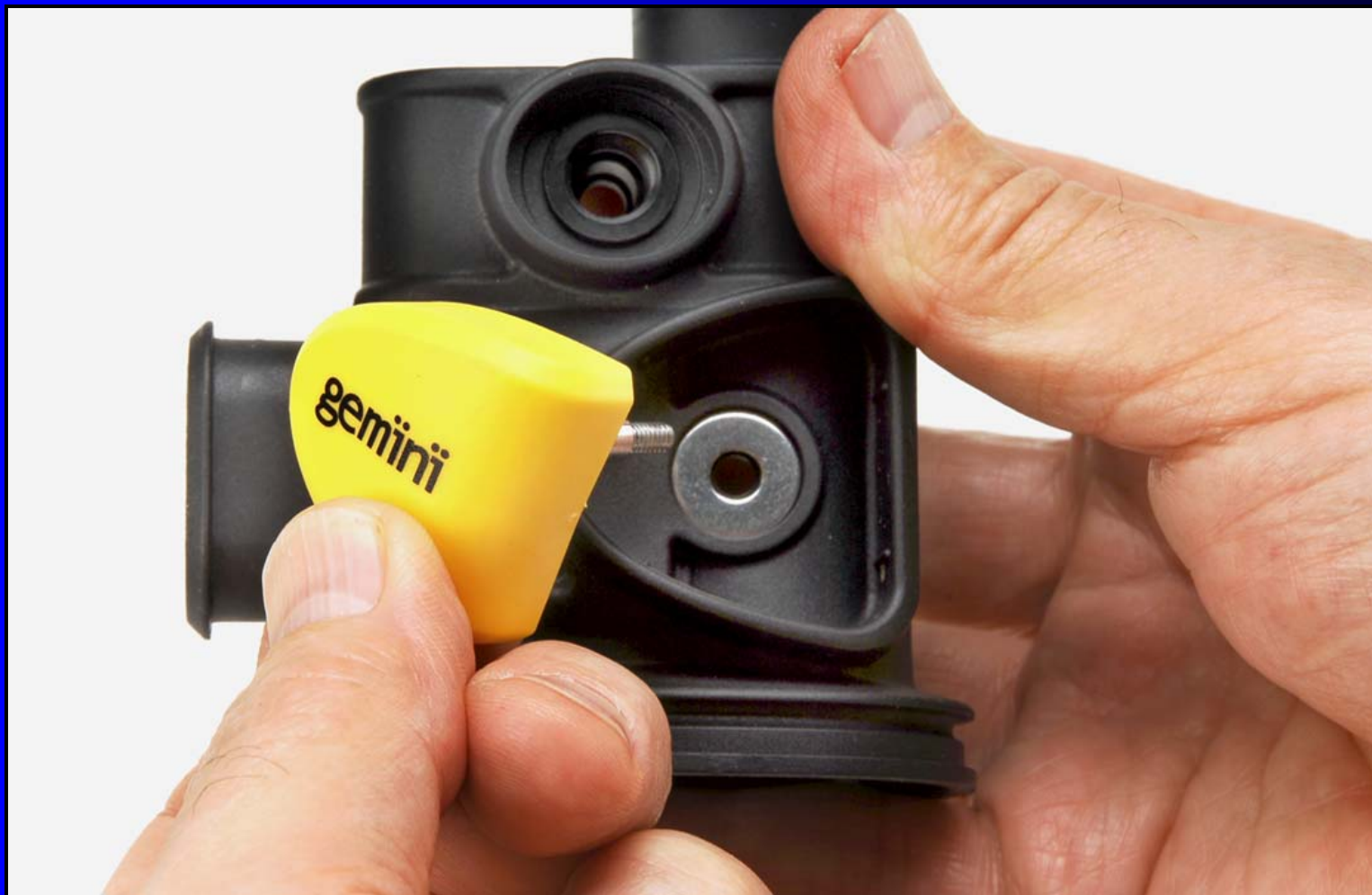




INSTALL
WASHER







CONICAL SIDE DOWN





INSTALL NEW LOCK NUT





USE 1/4-INCH
NUT DRIVER
CAUTION HAND
TIGHTEN ONLY



FINGER TIGHT



Reassembly Procedures

POWER INFLATOR ASSEMBLY





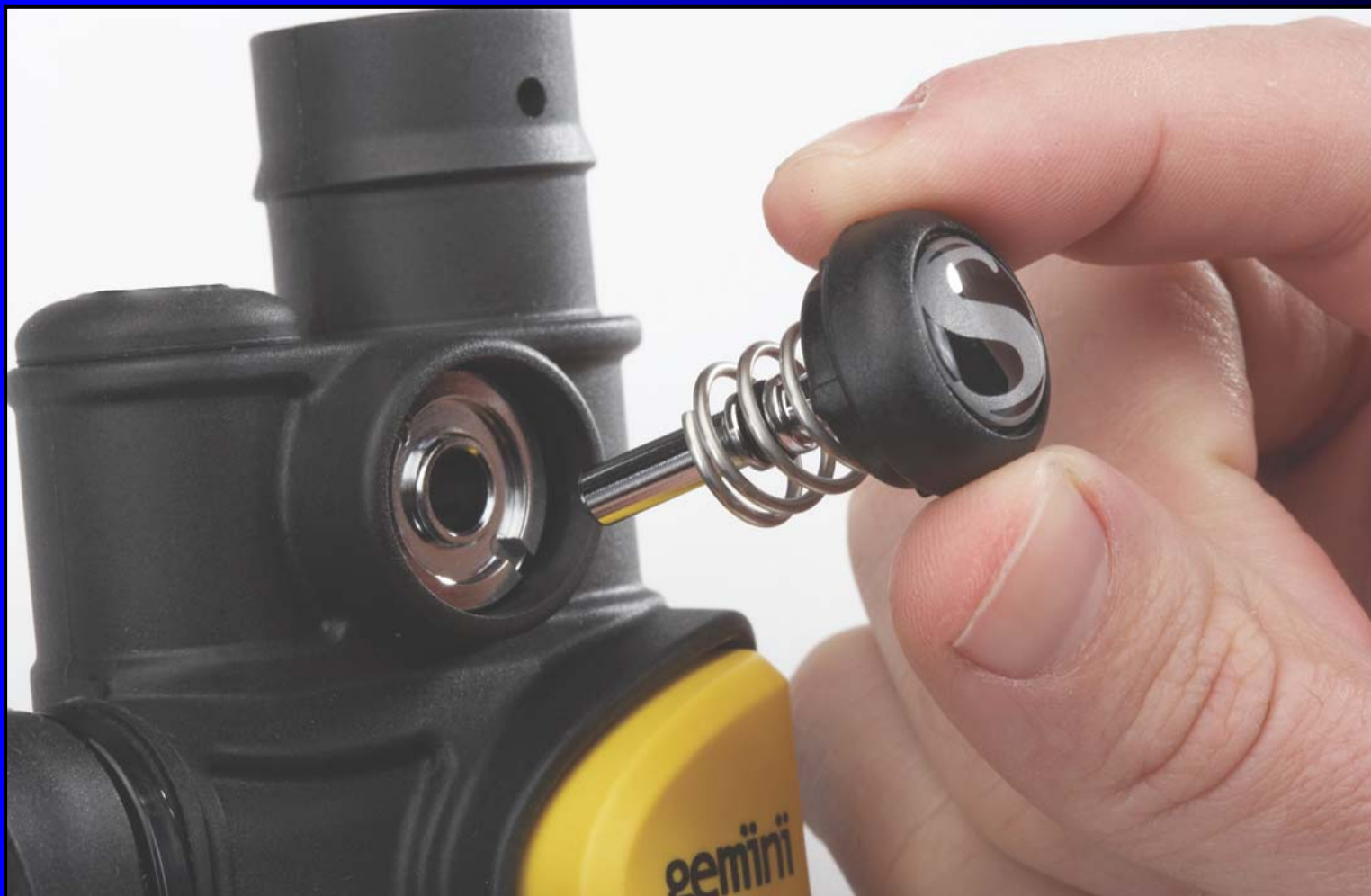
USE NEEDLE NOSE
PLIERS



INSTALL NEW O-RING







WIDE SPACE
UNDER "S"
LOGO



INSTALL NEW O-RING

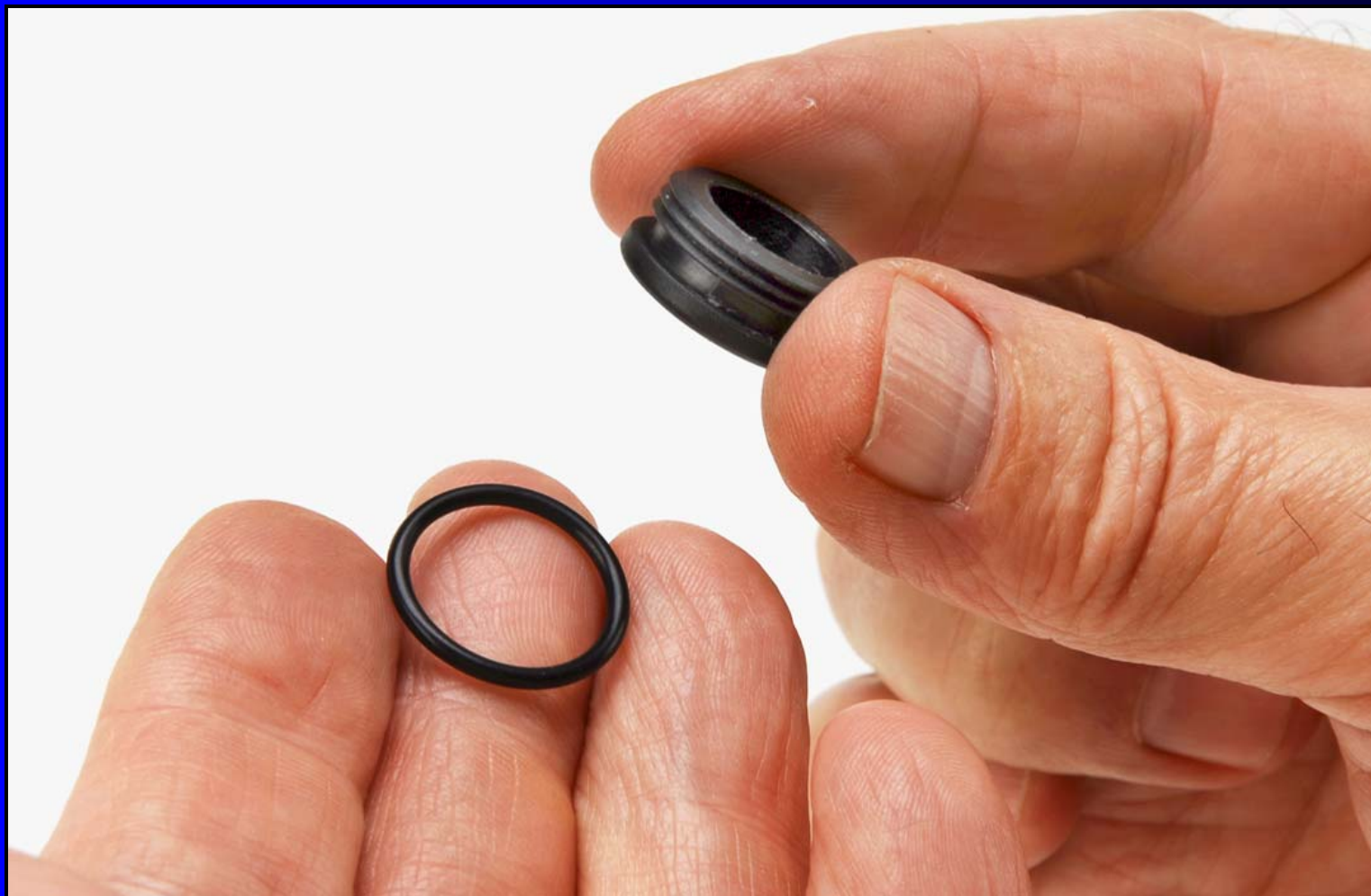




USE SMALL FLAT
BLADE SCREWDRIVER

HANDTIGHT







USE NEEDLE NOSE PLIERS



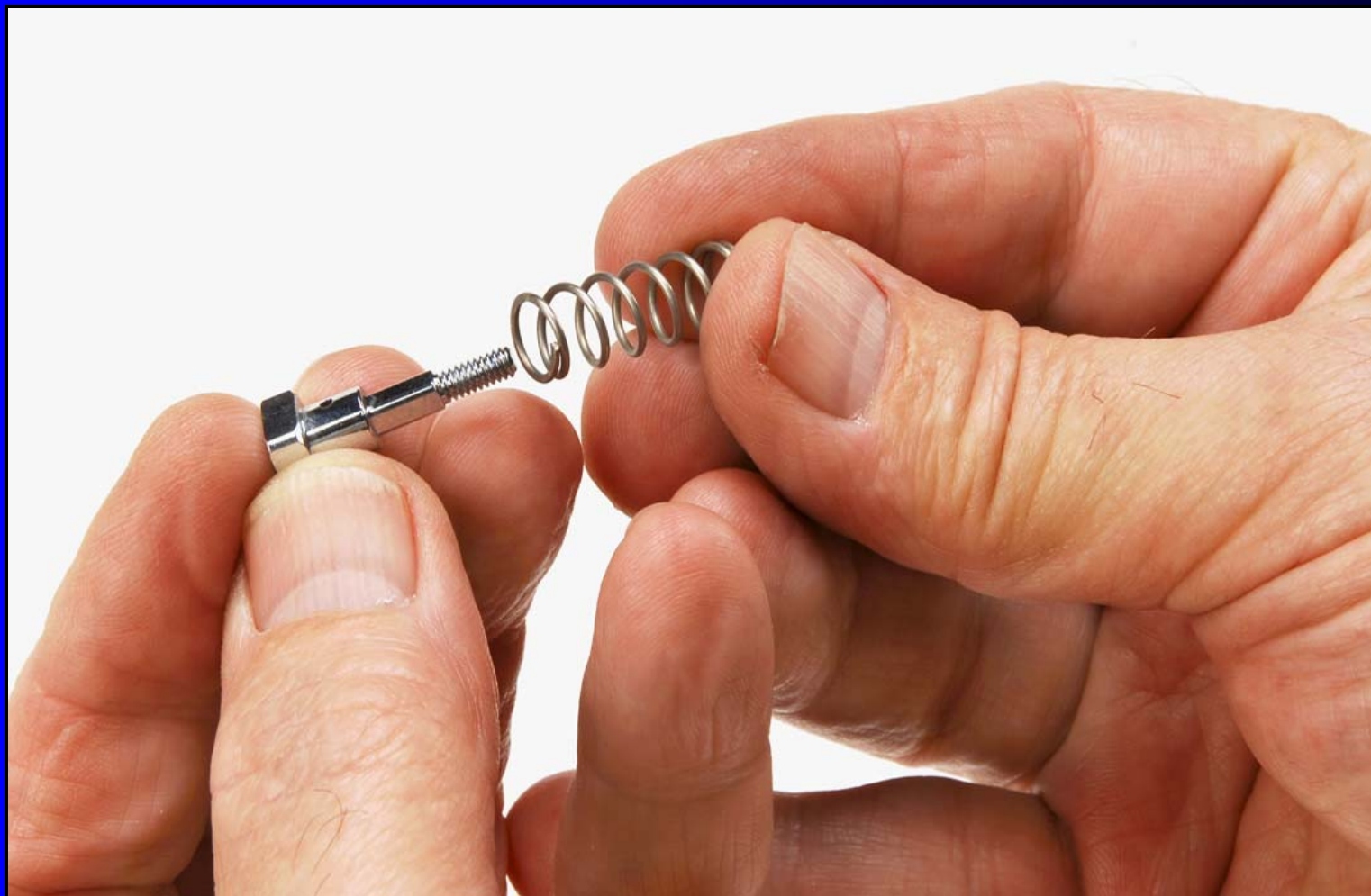
HANDTIGHT

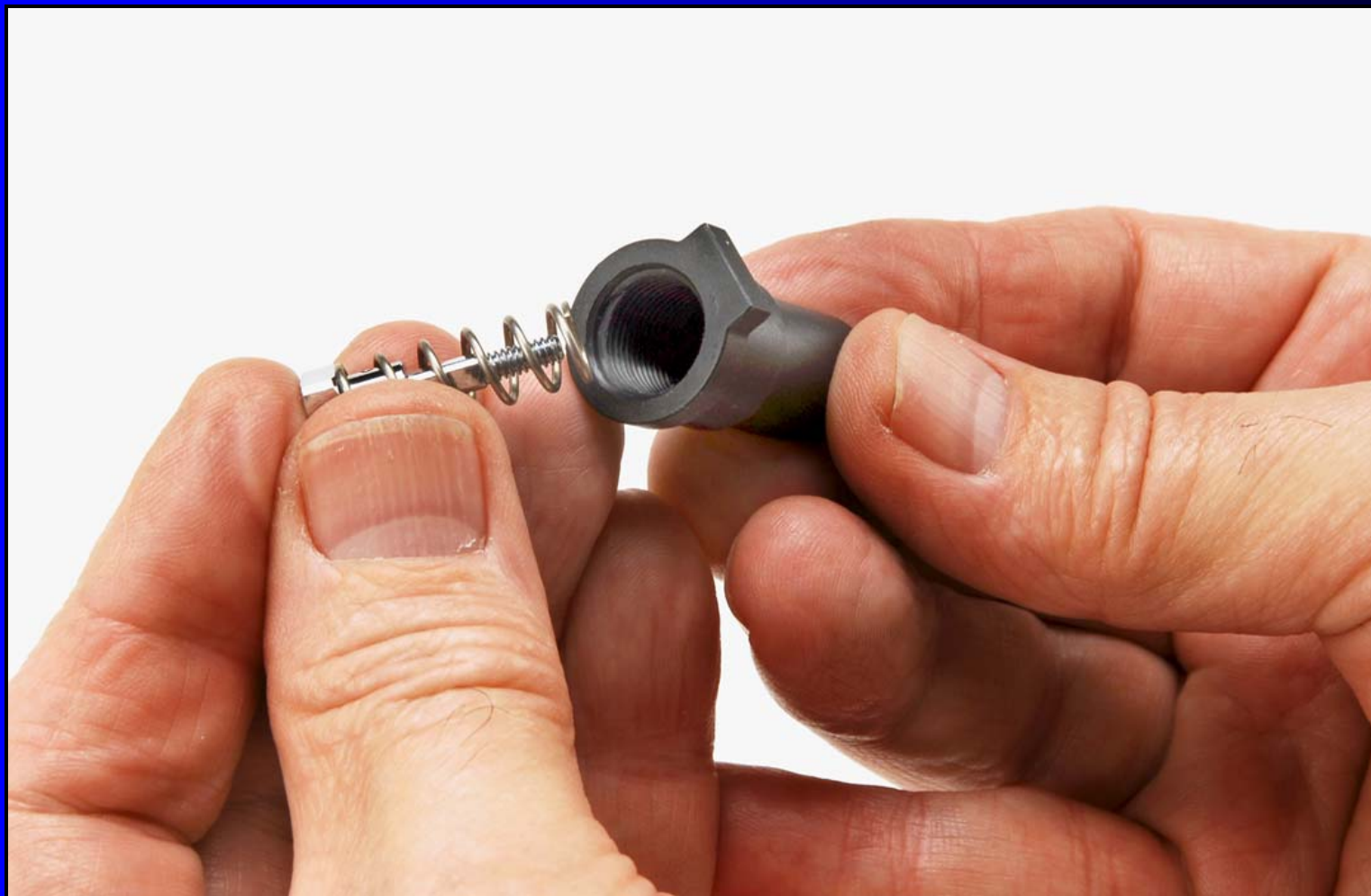
Reassembly Procedures

DEMAND VALVE ASSEMBLY

NEW L.P. SEAT





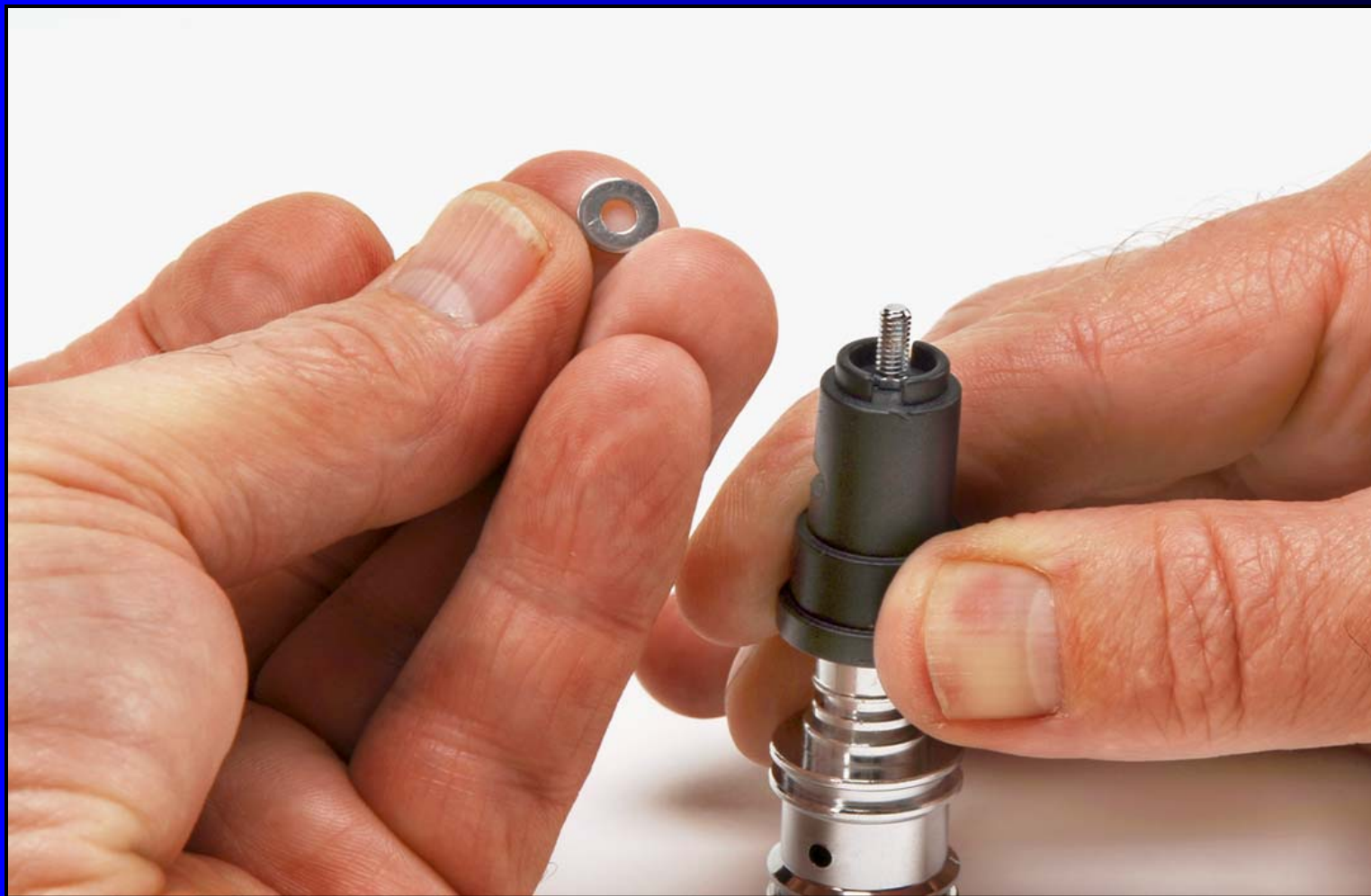


USE Q.D. END OF REGULATOR
VALVE BODY





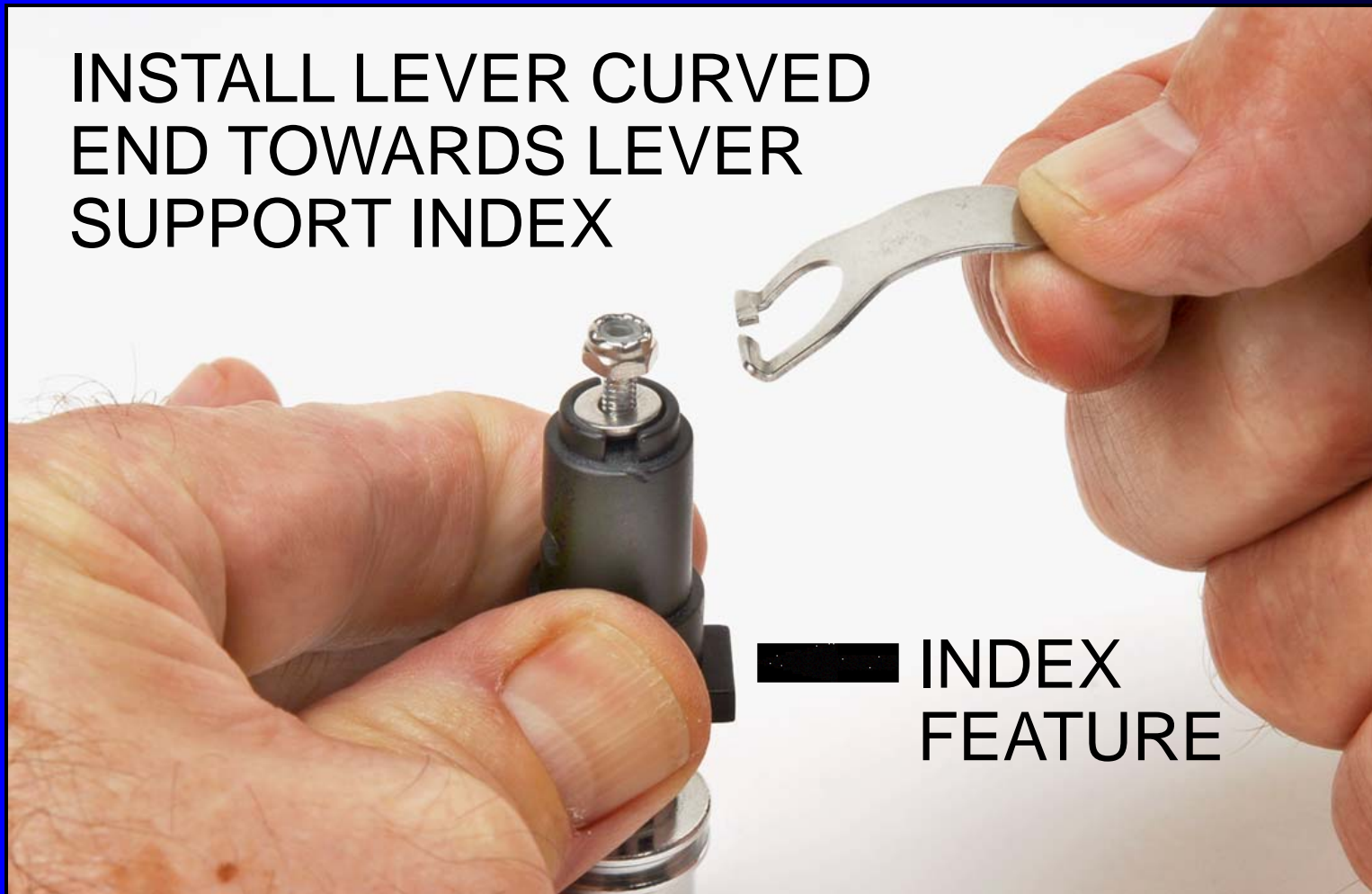
COMPRESS
SPRING
EXPOSE
POPPET
THREADS



CATCH TREADS OF NEW LOCK NUT ON POPPET



INSTALL LEVER CURVED
END TOWARDS LEVER
SUPPORT INDEX



INDEX
FEATURE



USE 1/4-INCH
NUT DRIVER
THREAD
LOCKNUT
UNTIL POPPET
FLUSH WITH
END OF NUT

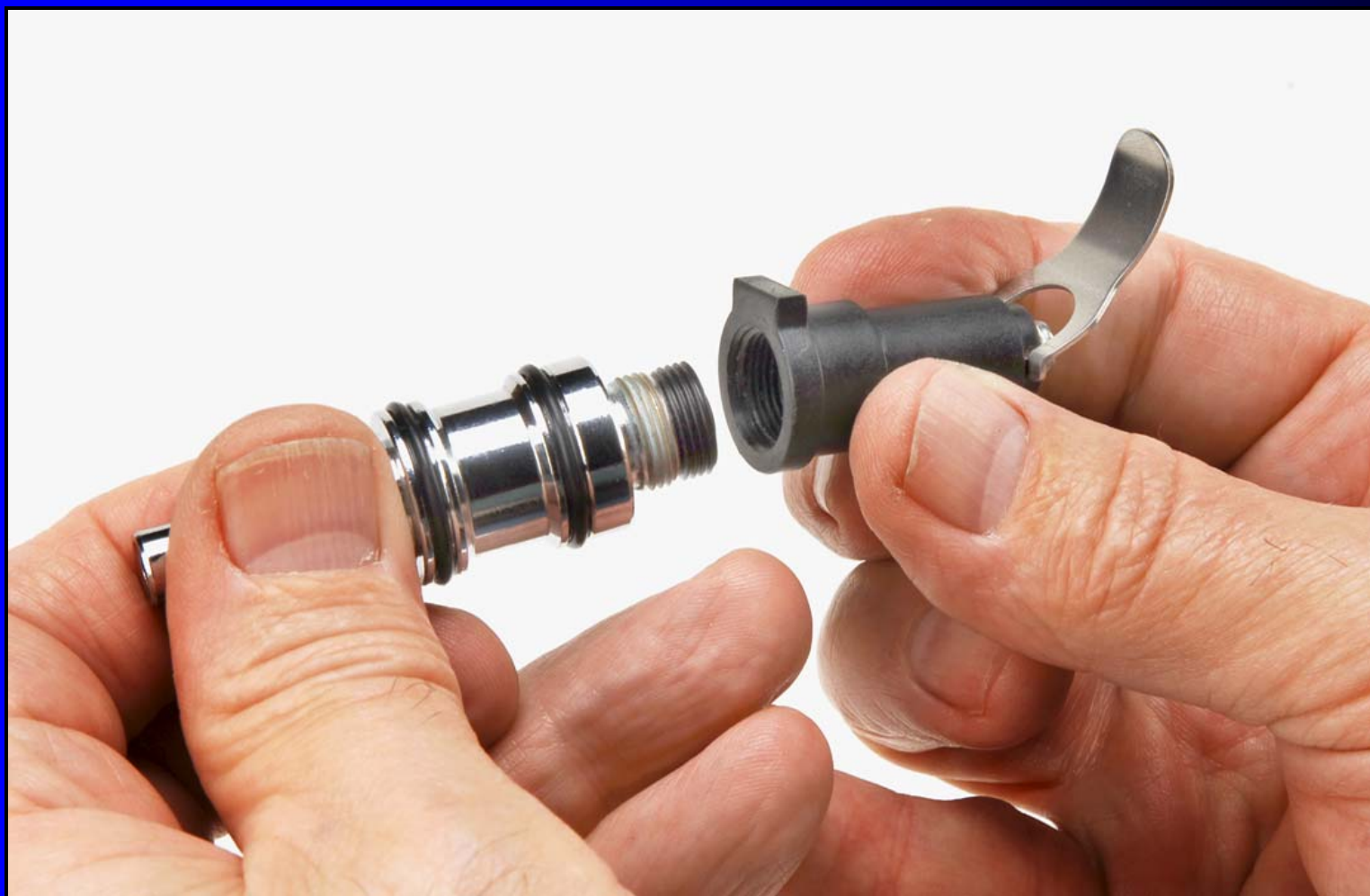


INSTALL NEW O-RING











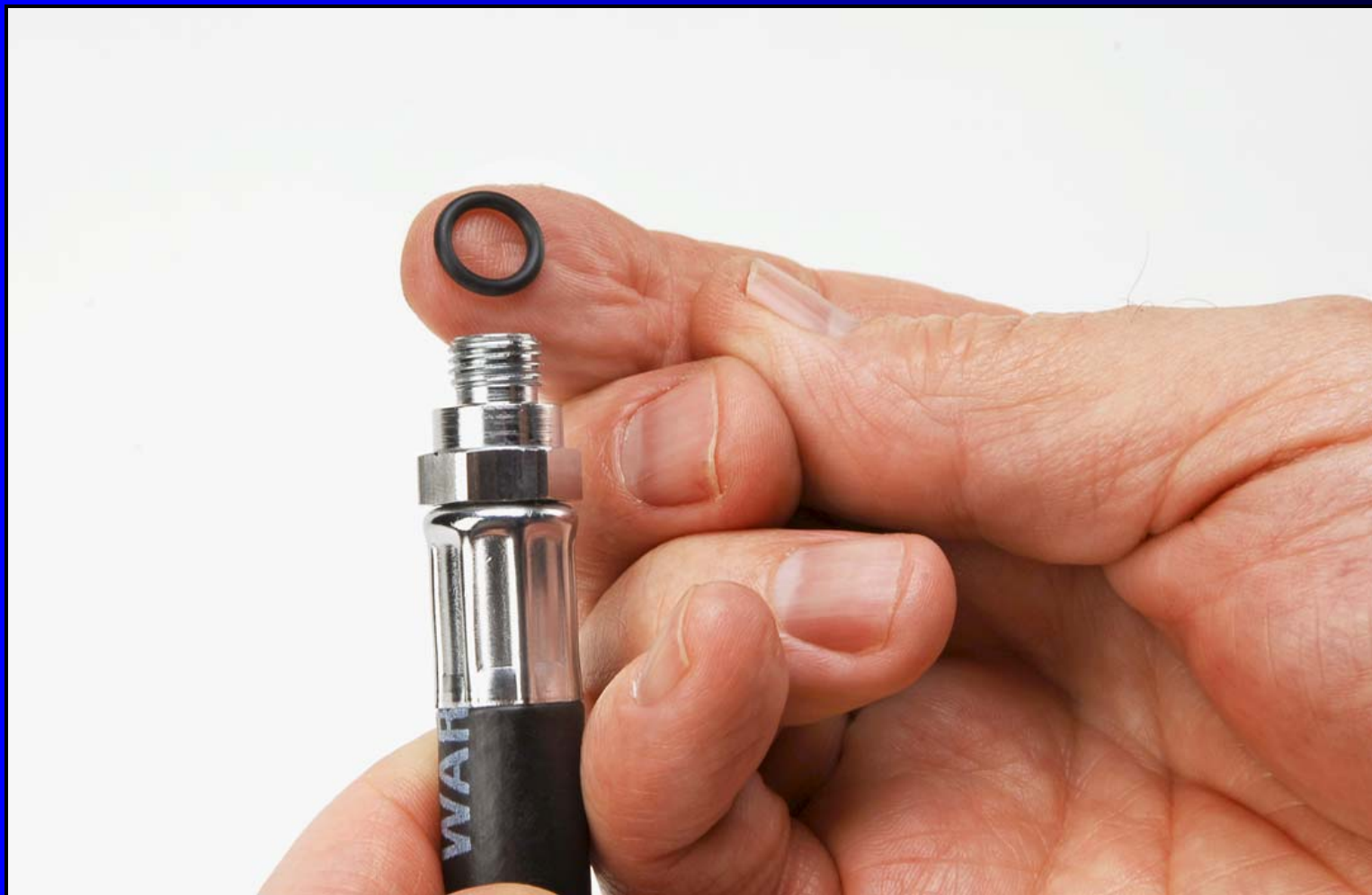
INSTALL "GENTLY"
WITH PLIERS





USE SMALL FLAT BLADE
SCREWDRIVER









USE 11/13 AND 13/16-INCH OPEN END
WRENCHES HAND TIGHT ONLY



**CONNECT QD HOSE
TO A PROPERLY
ADJUSTED FIRST-
STAGE REGULATOR
USING A 9/16-INCH
OPEN END WRENCH**



Regulator Adjustment and Testing Procedures

ADJUST LOCKNUT
USE 1/4-INCH NUT
DRIVER



LEVER HEIGHT ADJUSTMENT EVEN WITH EDGE OF HOUSING

USE TL123
SPECIALTY
TOOL



REGULATOR TEST

APPLY AIR PRESSURE TO
REGULATOR FIRST-STAGE
(2700 to 3500PSI)

CHECK FOR LEAKS FROM DEMAND VALVE

NO LEAKS

PROCEED TO FINAL
Reassembly and Final
Bench Testing Procedures

LEAKS

CHECK LEVER HEIGHT
Adjust Locknut if Required
(1/4-inch nut drive)

ADJUST SEAT CROWN IF REQUIRED
(3/16-inch hex key)





TURN CROWN "IN" 1/4 TURN USING
3/16-INCH HEX KEY IF STILL LEAKS
NO MORE THEN ONE
MORE 1/4 TURN
(CLOCKWISE)

IF AFTER
ADJUSTMENT
IT STILL LEAKS
DISASSEMBLE
AND INSPECT
FOR PROBLEM

Final Reassembly and Bench Test Procedures





ALIGN NOTCH WITH BACK OF
REGULATOR
HOUSING



**SECOND STAGE
OPENING EFFORT
1.4-2.4 INCHES OF
WATER**

**INTERMEDIATE
PRESSURE RANGE
125-155 PSI**

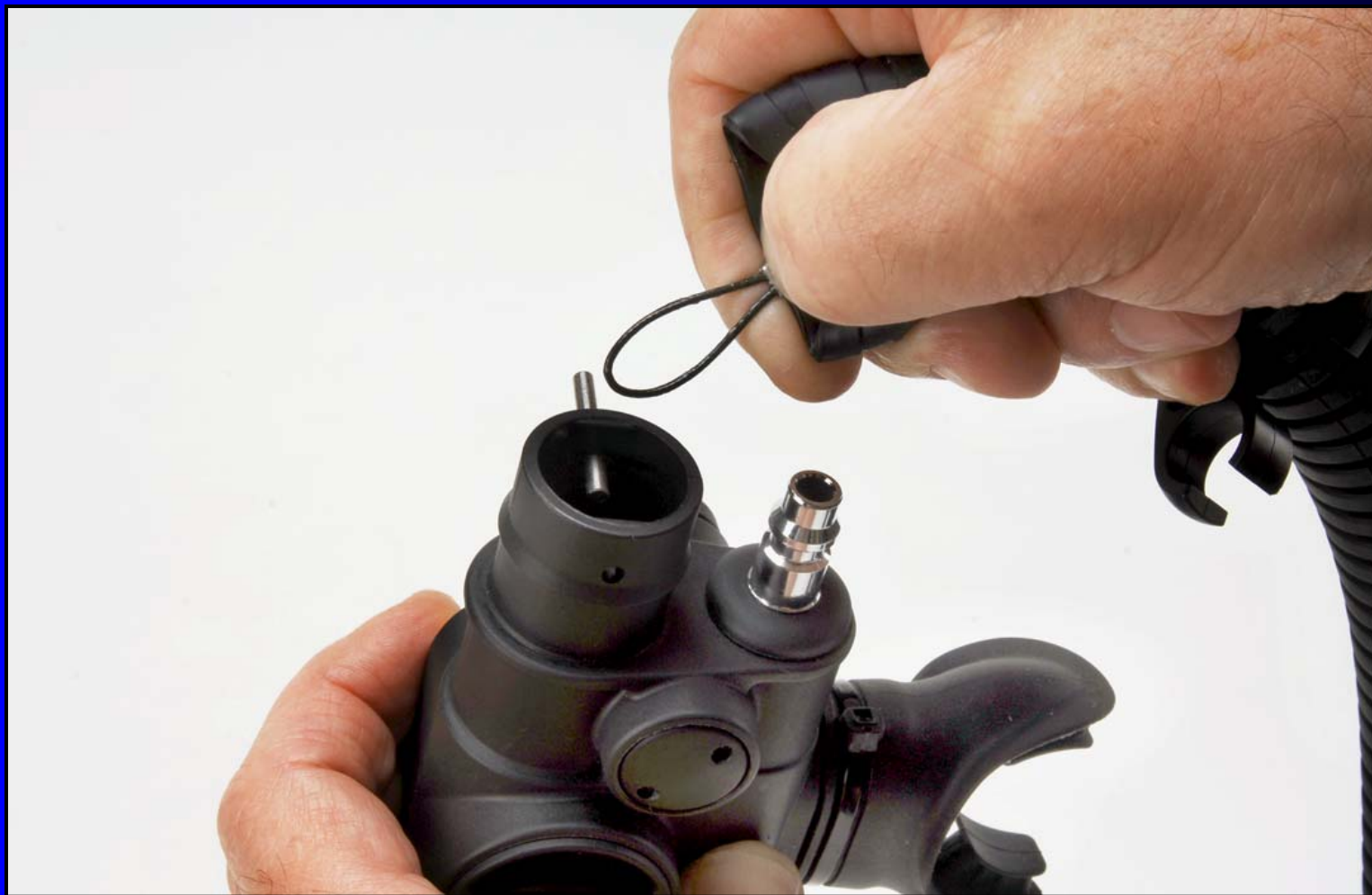




















THE END

The image features a solid blue background. On the right side, there is a dark blue, curved shape that resembles a stylized corner or a shadow, extending from the top right towards the bottom right. The text "THE END" is centered horizontally and rendered in a bold, yellow, sans-serif font with a black outline.